

Research article

Open Access

The anticancer activity of lytic peptides is inhibited by heparan sulfate on the surface of the tumor cells

Bodil Fadnes^{1,2}, Øystein Rekdal*^{1,4} and Lars Uhlin-Hansen^{2,3}

Address: ¹Department of Medical Biochemistry, Institute of Medical Biology, University of Tromsø, Norway, ²Department of Anatomy and Pathology, University Hospital of North Norway, Tromsø, Norway, ³Department of Pathology, Institute of Medical Biology, University of Tromsø, Tromsø, Norway and ⁴Lytix Biopharma, Tromsø Science Park, N-9294, Tromsø, Norway

Email: Bodil Fadnes - bodilf@fagmed.uit.no; Øystein Rekdal* - oysteinr@fagmed.uit.no; Lars Uhlin-Hansen - lars.uhlin.hansen@unn.no

* Corresponding author

Published: 15 June 2009

Received: 17 September 2008

BMC Cancer 2009, 9:183 doi:10.1186/1471-2407-9-183

Accepted: 15 June 2009

This article is available from: <http://www.biomedcentral.com/1471-2407/9/183>

© 2009 Fadnes et al; licensee BioMed Central Ltd.

This is an Open Access article distributed under the terms of the Creative Commons Attribution License (<http://creativecommons.org/licenses/by/2.0>), which permits unrestricted use, distribution, and reproduction in any medium, provided the original work is properly cited.

Abstract

Background: Cationic antimicrobial peptides (CAPs) with antitumor activity constitute a promising group of novel anticancer agents. These peptides induce lysis of cancer cells through interactions with the plasma membrane. It is not known which cancer cell membrane components influence their susceptibility to CAPs. We have previously shown that CAPs interact with the two glycosaminoglycans (GAGs), heparan sulfate (HS) and chondroitin sulfate (CS), which are present on the surface of most cells. The purpose of this study was to investigate the role of the two GAGs in the cytotoxic activity of CAPs.

Methods: Various cell lines, expressing different levels of cell surface GAGs, were exposed to bovine lactoferricin (LfcinB) and the designer peptide, KW5. The cytotoxic effect of the peptides was investigated by use of the colorimetric MTT viability assay. The cytotoxic effect on wild type CHO cells, expressing normal amounts of GAGs on the cell surface, and the mutant pgsA-745, that has no expression of GAGs on the cell surface, was also investigated.

Results: We show that cells not expressing HS were more susceptible to CAPs than cells expressing HS at the cell surface. Further, exogenously added heparin inhibited the cytotoxic effect of the peptides. Chondroitin sulfate had no effect on the cytotoxic activity of KW5 and only minor effects on LfcinB cytotoxicity.

Conclusion: Our results show for the first time that negatively charged molecules at the surface of cancer cells inhibit the cytotoxic activity of CAPs. Our results indicate that HS at the surface of cancer cells sequesters CAPs away from the phospholipid bilayer and thereby impede their ability to induce cytolysis.

Background

Cationic antimicrobial peptides (CAPs), also termed host defense peptides, play a part in the innate immune system [1]. CAPs can be assigned into two broad groups based on their target specificity, one group comprising antimicrobial activity, such as defensins [2,3], and cecropins [4],

which have specificity for prokaryotic cell membranes, and a second group, the venom peptides with activity against both prokaryotic and eukaryotic cell membranes e.g. melittin [5] and mastoparan [6]. In addition, some of the CAPs show selective activity against cancer cells. These peptides act via a non-receptor-mediated pathway and

constitute a promising group of novel anticancer agents with a new mode of action and a broad spectrum of anti-cancer activity. Several studies, included our earlier reported *in vivo* studies, indicate that CAPs may have a potential for local treatment of solid tumors [7-10]. Compared to conventional chemotherapy these CAPs display a higher specificity for cancer cells versus normal cells [11,12]. In addition, the peptides are able to kill cancer cells that have become resistant to conventional chemotherapeutics [13-16]. It has also been reported that certain CAPs have the potential to enhance the cytotoxic activity of different chemotherapeutics against multi-drug resistant tumor cells [13-15]. The reason why CAPs display activity against chemoresistant cancer cells probably lies in their rapid mode of action against the plasma membrane, resulting in lysis of the cells [17]. Most of the CAPs selective for cancer cells interact with the target membrane through the "carpet model", where the peptides align parallel to the outer membrane surface and permeate the membrane after a threshold concentration of peptides have been reached [18,19]. In addition, some CAPs can also trigger apoptosis in cancer cells via mitochondrial membrane disruption [20].

It is not yet clarified which components in the plasma membrane render cancer cells more susceptible to CAPs than non-malignant cells. Due to the cationic nature of the peptides, the interaction with the cell surface of the target cells is most likely facilitated by negatively charged molecules in the plasma membrane. Whereas the plasma membranes of non-malignant eukaryotic cells consist primarily of zwitterionic and neutral phospholipids [21], a number of studies have revealed that the outer membrane leaflet of cancer cells is more negatively charged than their normal counterparts. An elevated expression of the anionic phospholipid phosphatidylserine in the outer leaflet of the plasma membrane has been found in several types of cancer cell lines [22-25]. Alterations in the carbohydrate portion of glycoproteins and glycolipids, including increased sialylation, also contributes to a more negatively charged tumor cell surface [26]. The enhanced expression of terminal sialic acids on cell surface N-linked glycans and O-linked glycans has been reported as a characteristic in a variety of cancers [27].

Proteoglycans (PGs) are also expressed on the cell surface. These are characterized by highly negatively charged glycosaminoglycan (GAG) side chains attached to a core protein [28]. Two major classes of GAG side chains are heparan sulfate (HS) and chondroitin sulfate (CS). These molecules consist of a linear repeat of up to 100 disaccharide units [29,30]. Both HS and CS are highly sulfated with an average number of approximately 1.2 and 1.0 negatively charged sulfate groups per disaccharide unit, respectively [31,32]. The sulfate groups make therefore

the PGs some of the most anionic molecules on the cell surface. It has been shown that several cancer cells have a different expression of cell surface PGs, compared to their normal counterpart cells [33-35]. In addition, it has been shown that the degree and pattern of sulfation of the GAG chains may be altered during malignant transformation [36,37].

One member of the CAP family is bovine lactoferricin (LfcinB). This peptide displays cytotoxic activity against a variety of cancer cells *in vitro*, without harming normal cells [8,38]. In addition, LfcinB is able to prevent tumor growth and metastasis in several mouse models [7,8,39]. Previous studies have revealed that LfcinB induces cell death in tumor cells by targeting the plasma membrane and after internalization, the mitochondria [8].

We have previously shown that LfcinB binds to GAGs [40]. Since the fundamental activity of antimicrobial peptides stems from their ability to interact with negatively charged membrane molecules, we hypothesized that GAGs at the surface of target cells may interact with CAPs and enhance their cytotoxic activity. In the present study the role of GAGs in the cytotoxic activity of LfcinB was thus investigated. LfcinB is a 25-mer peptide with a disulfide bridge that forms a stabilized amphipathic β -sheet structure. In addition, the KW5 peptide, a 21-mer peptide designed to adopt an idealized amphipathic α -helix was also included in the study.

Methods

Reagents

The LfcinB peptide was provided by the Centre for Food Technology (Queensland, Australia). All Fmoc-amino acids, Fmoc-resins and chemicals used during peptide synthesis, cleavage and precipitation were purchased from PerSeptive (Hertford, UK), Fluka (Buchs, Switzerland) and Sigma-Aldrich (St. Louis, MO). Fetal bovine serum (FBS) was obtained from Biochrom KG (Berlin, Germany), and L-glutamine from Gibco (Paisley, Scotland). MTT (3-(4, 5-dimethylthiazol-2-yl)-2,5-diphenyl tetrazolium bromide) was obtained from Sigma-Aldrich (Oslo, Norway). Heparitinase (EC 4.2.2.8) and chondroitinase ABC (EC 4.2.2.4) were from Seikagaku Corporation (Chuo-ku, Tokyo, Japan). Heparin (H-3393) and chondroitin sulfate (C-4384) were obtained from Sigma-Aldrich (Oslo, Norway). [35 S]Sulfate (code SJS-1) was purchased from Amersham Biosciences (Buckinghamshire, England).

The lymphoma cell lines KMS-5, KMM-1 and Sudhl-4 were a kind gift from Mark Raffeld, Hematopathology Section, Laboratory of Pathology, National Cancer Institute, National Institutes of Health, Bethesda, MD. The lymphoma cell lines Raji and Ramos were provided by Dr.

Michael Norcross, Division of Hematologic Products, Center for Biologics Evaluation and Research, Food and Drug Administration, Bethesda, MD, while the lymphoma cell line U-266, colon carcinoma cell line HT-29 and the melanoma cell line FEMX were purchased from ATCC. Jeffery D. Esko, Department of Cellular and Molecular Medicine, University of California, San Diego, USA, kindly provided us with the mutant Chinese hamster ovary cell line pgsA-745, which does not express GAGs at the cell surface, as well as the wild type CHO-K1 that expresses normal amounts of GAGs [41,42].

Peptide synthesis, purification and analysis

The peptide KW5, ((KAAKAA)₃ W 7,9,16), was synthesized by solid-phase methods using standard Fmoc chemistry on a Pioneer Peptide synthesizer (Applied Biosystems, Foster City, CA). Crude peptides were purified by preparative RP-HPLC (Waters, Milford, MA) using a C₁₈ column (Delta-Pak™ C18, 100 Å, 15 µm, 25–100 mm), and analyzed on an analytical C₁₈ HPLC column (Delta-Pak™ C18, 100 Å, 5 µm, 3.9 × 150 mm) (Waters, Milford, MA). The purity of the peptides was found to be > 95%. Peptide characterization was done by positive ion electrospray ionization mass spectrometry on a VG quadrupole mass spectrometer (VG Instruments Inc., Altringham, UK).

Cell cultures

The HT-29 and FEMX cell lines were maintained as monolayer cultures in RPMI-1640 supplemented with 10% (v/v) FBS and 1% L-glutamine, while the CHO-K1 and pgsA-745 cell lines were cultured in HAM's-F12 supplemented with 10% (v/v) FBS and 1% L-glutamine. All the lymphoma cell lines were grown in suspension in RPMI-1640 medium supplemented with 10% (v/v) FBS and 1% L-glutamine. All cells were grown in tissue culture flasks in humidified atmosphere of 95% air and 5% CO₂ at 37°C.

Cytotoxicity assay

The colorimetric MTT viability assay was used to investigate the cytotoxic effect of the peptides. The FEMX and HT-29 cells were seeded at a concentration of 2 × 10⁵ cell/ml, and the CHO-K1 and pgsA-745 cells at a concentration of 1.5 × 10⁵ cell/ml in a volume of 0.1 ml in 96-well plates. The cells were allowed to adhere overnight in complete medium. Before adding different concentrations of the peptides (1–500 µg/ml) to the cells, the culture medium was removed and the cells were washed twice in serum-free culture medium. The non-adherent lymphoma cell lines were seeded at a density of 4 × 10⁵ cells/ml using serum-free medium. The cells were incubated with the LfcinB peptide at 37°C for 24 h or with the KW5 peptide for 30 min. Due to our previous structure-activity relationship studies on lactoferrin and LfcinB [7,43] structural parameters important for lytic activity against

cancer cells are optimized in *de novo* designed peptides. Hence, the KW5 peptide is more active and kills cancer cells more efficiently than LfcinB. Cells in serum-free medium alone were used as a negative control whereas cells treated with 1% Triton X-100 in serum-free medium were used as a positive control for 100% cell death. After incubation, 10 µl (adherent cells) or 20 µl (non-adherent cells) MTT-solution (5 mg MTT per ml phosphate buffered saline) was added to each well and the incubation was continued for 2 h. A volume of 80 µl or 130 µl per well was removed from the non-adherent and the adherent cells, respectively. In order to dissolve the formazan crystals, 100 µl of 0.04 M HCl in isopropanol was added and the plates were shaken for 1 h on a Thermolyne Roto Mix (Dubuque, IA) at room temperature. The optical density was measured on a microtitre plate reader (Thermomax Molecular Devices, NJ). Cell survival was determined from the ΔA₅₉₀ nm relative to the negative control (100% living cells) and expressed as 50% inhibitory concentration (IC₅₀).

Sodium chlorate treatment

The FEMX and HT-29 cells were seeded at a concentration of 2 × 10⁵ cell/ml in a volume of 0.1 ml in 96-well plates. The cells were incubated for 24 h at 37°C in complete medium supplemented with 30 mM sodium chlorate, which decreases sulfation by inhibiting ATP-sulphurylase [44]. After the treatment period the culture medium containing sodium chlorate was removed and the cells were washed with serum free RPMI-1640 medium before the cytotoxic activity of the peptides was investigated using the MTT assay described above.

Heparitinase treatment

Heparitinase purified from *Flavobacterium heparinum* was used for enzymatic cleavage of cell surface HS. Heparitinase (0.1 U) was dissolved in 100 µl 0.1% M Tris acetate (pH 7.3). FEMX and HT-29 cells were seeded at a concentration of 1 × 10⁵ cell/ml in a volume of 0.1 ml in 96-well plates. After 48 h at 37°C the cells were treated with 0, 01 U heparitinase in serum free medium for 2 h at 37°C. Thereafter some cell cultures were washed with serum free medium before the cytotoxic activity of the peptides was investigated. In other cell cultures heparitinase was present during the whole peptide incubation period.

Radiolabeling and isolation of ³⁵S-labeled macromolecules

Cell cultures were radiolabeled for 20 h by adding [³⁵S]sulfate to a final concentration of 50 µCi/ml at the time of cell plating. To be able to compare the amount of ³⁵S-labeled macromolecules synthesized by the different cell lines, the cells were cultured at same level of sub-confluence. After the incubation time, the plasma membrane-associated ³⁵S-labeled macromolecules were harvested by washing the cells twice with serum free-medium and sub-

sequently incubated for 15 min at 37°C in the presence of 10 µg/ml of trypsin [45]. Free [³⁵S]sulfate was removed by gel filtration on Sephadex G50 Fine columns (bed volume 4 ml, equilibrated with 0.5 M Tris/HCl, pH 8.0 and 0.15 M NaCl and eluted with dH₂O). Aliquots from the membrane fractions were analyzed for radioactivity in a scintillation counter after the addition of Ultima Gold XR scintillation fluid. The rest of the material was immediately frozen and stored until further analysis.

Alkali treatment and gel chromatography

The ³⁵S-labeled macromolecules were subjected to alkali treatment (0.5 M NaOH over night at 45°C, followed by neutralization with 0.5 M HCl), resulting in liberation of free ³⁵S-labeled GAG chains. The ³⁵S-labeled macromolecules were subjected to Superose 6 gel chromatography both before and after alkali treatment. Markers for void (V₀) and total volume (V_t) were blue dextran and [³⁵S]sulfate, respectively. The columns were run in 4 M guanidine-HCl with 0.05 M sodium acetate, pH 5.8. Fractions were collected and the radioactivity counted in a scintillation counter.

Selective PG degradation

The ³⁵S-labeled macromolecules were subjected to enzymatic treatment with chondroitinase ABC (cABC), which depolymerizes CS. Incubations with cABC were performed at 37°C overnight with 0.01 U enzyme per sample in 0.05 M Tris/HCl, 0.05 M sodium acetate, pH 8.0. The samples were analyzed on Sephadex G-50 Fine columns (bed volume 4 ml, equilibrated and eluted with the Tris/HCl buffer). In addition, parallel samples were subjected to HNO₂ treatment at pH 1.5, in order to degrade the HS chains [46]. The samples were analyzed by Sephadex G-50 Fine columns (bed volume 4 ml, equilibrated and eluted

with dH₂O). Aliquots from the collected fractions were analyzed for radioactivity in a scintillation counter after the addition of Ultima Gold XR scintillation fluid.

Results

Cytotoxic effect of the peptides

The LfcinB and KW5 peptides were tested for cytotoxic activity against the melanoma cell line FEMX and the colon carcinoma cell line HT-29. The cytotoxic activity of the peptides was determined by the colorimetric MTT viability assay. Dose-response studies revealed that the peptides displayed a significantly higher cytotoxic activity against the FEMX cells compared to the HT-29 cells (Figure 1). LfcinB showed a 3.7 fold higher activity against the FEMX cells (IC₅₀ = 40 µM) compared to the HT-29 cells (IC₅₀ = 148 µM). The KW5 peptide displayed a 1.8 fold higher activity against the FEMX cells (IC₅₀ = 30) compared to the HT-29 cells with an IC₅₀ value of 55 µM (Table 1).

Sodium Chlorate treatment of the target cells enhances the cytotoxic effect of the peptides

In order to investigate the role of cell surface PGs for the cytotoxic effect of the peptides, the cells were incubated with sodium chlorate, an agent known to decrease the sulfation of the GAG chains [47]. The cells were incubated with sodium chlorate for 24 hours before the different peptides were added. The cytotoxic activity of the peptides against chlorate-treated and non-treated cells was investigated (Figure 2). Surprisingly, the results showed that the peptides displayed a significantly higher effect against the chlorate-treated cells compared to the non-treated cells, indicating that negatively charged GAGs at the cell surface have an inhibitory effect on the cytotoxic activity of the peptides. Incubating the cells with chlorate under the cho-

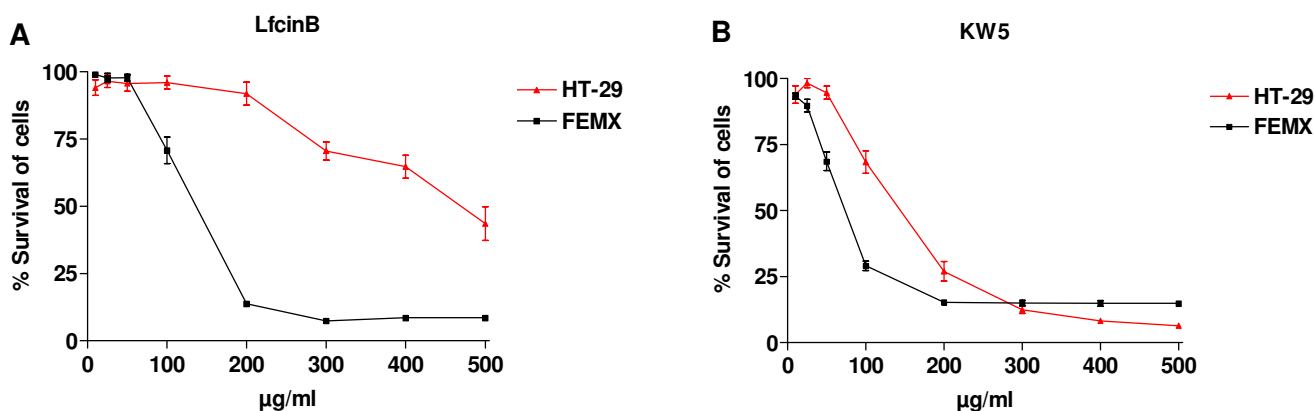


Figure 1
The cytotoxic activity of LfcinB and KW5 against FEMX melanoma and HT-29 colon carcinoma cells. The dose response curves for LfcinB (A) and KW5 (B) are plotted as percent survival of the cells against different peptide concentrations (µg/ml). The curves correspond to five experiments performed in duplicate ± SEM.

Table 1: The cytotoxic effect of LfcinB and KW5 against FEMX and HT-29 cells.

| Peptides | FEMX ^a IC ₅₀ (μM) | HT-29 IC ₅₀ (μM) | Ratio(IC ₅₀)HT-29 cells/FEMX cells |
|----------|--|--------------------------------|--|
| LfcinB | 40 ± 7 | 148 ± 8 | 3.7 |
| KW5 | 30 ± 3 | 55 ± 14 | 1.8 |

^aIC₅₀ is the inhibitory concentration of the peptides where 50% of the cells are killed.

Data are mean ± SEM (n = 5).

sen conditions did not cause any reduction in cell viability, as measured by MTT assay (not shown).

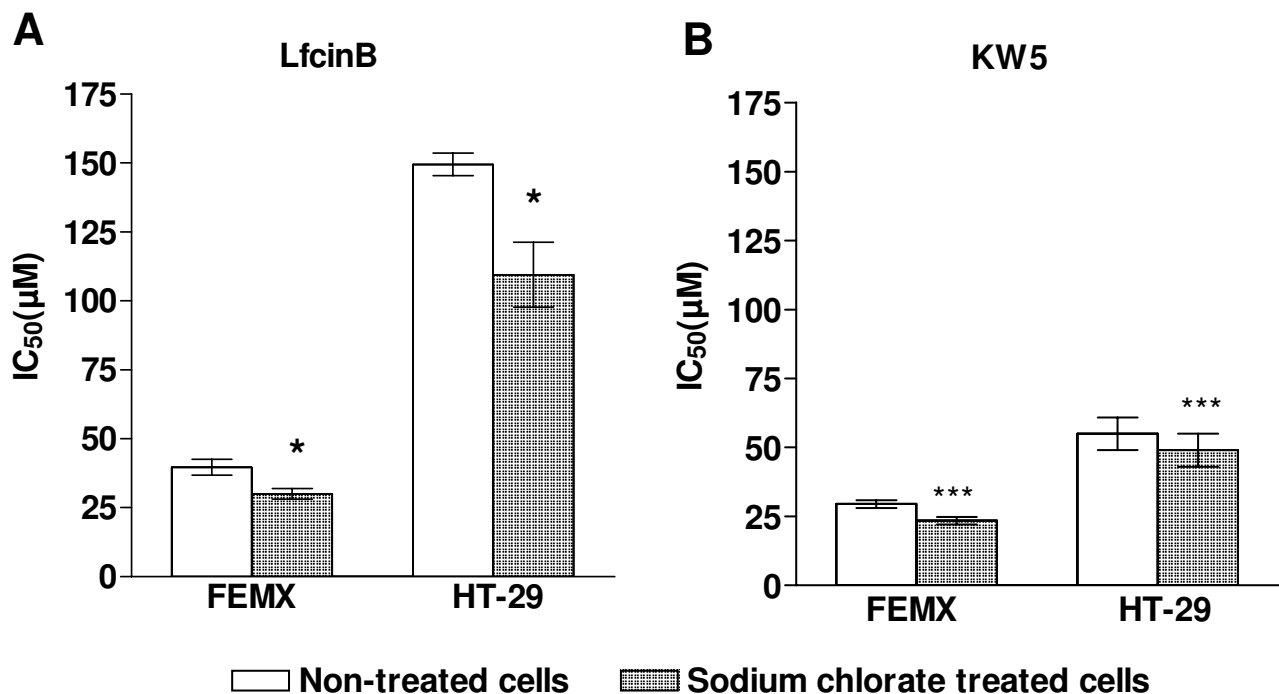
GAG deficient CHO cells were more susceptible for the peptides

In order to verify the finding that GAGs have an inhibitory effect on the activity of the peptides, the cytotoxic effect of LfcinB and KW5 against wild type CHO cells expressing normal amounts of GAGs on the cell surface, and the complete null mutant pgsA-745 that has no expression of GAGs on the cell surface, was investigated [41]. LfcinB displayed a significantly higher activity against the GAG defi-

cient pgsA-745 cell line compared to the wild type CHO cells, with IC₅₀ values of approximately 74 μM and 112 μM, respectively (Figure 3A). KW5 also displayed a much higher activity against the GAG deficient pgsA-745 cell line compared to the wild type cells, with IC₅₀ values of 32 μM and 170 μM, respectively (Figure 3B). These results confirm that GAGs expressed by the target cells inhibit the activity of the peptides.

Determination of the type of GAGs at the cell surface

In order to compare the amount of GAGs expressed on the cell surface of FEMX and HT-29 the cells were metabolically labeled with [³⁵S]sulfate. After removal of the culture medium, the GAGs associated with the plasma membrane were harvested as described in "Methods". The amount of ³⁵S-labeled macromolecules in the membrane fraction was quantified after Sephadex G-50 chromatography, as previously described [48]. The ³⁵S-labeled macromolecules were almost exclusively GAGs. The membrane fraction of the FEMX cells contained a higher amount (~45%) of ³⁵S-labeled GAGs compared to the HT-29 cells (Figure 4). Cell surface PGs can be substituted with both CS and HS chains [49]. Previously, we have reported that LfcinB

**Figure 2**

The cytotoxic effect of LfcinB and KW5 against sodium chlorate treated and non-treated FEMX and HT-29 cells. The results are shown as the mean IC₅₀ value ± SEM of LfcinB (A) and KW5 (B) against sodium chlorate treated (dotted bars) and non-treated (open bars) FEMX and HT-29 cells. The experiment was repeated four times in duplicate. Statistics were performed by a paired t-test (GraphPad). P values are shown as follows: * P < 0.05 and *** P < 0.001.

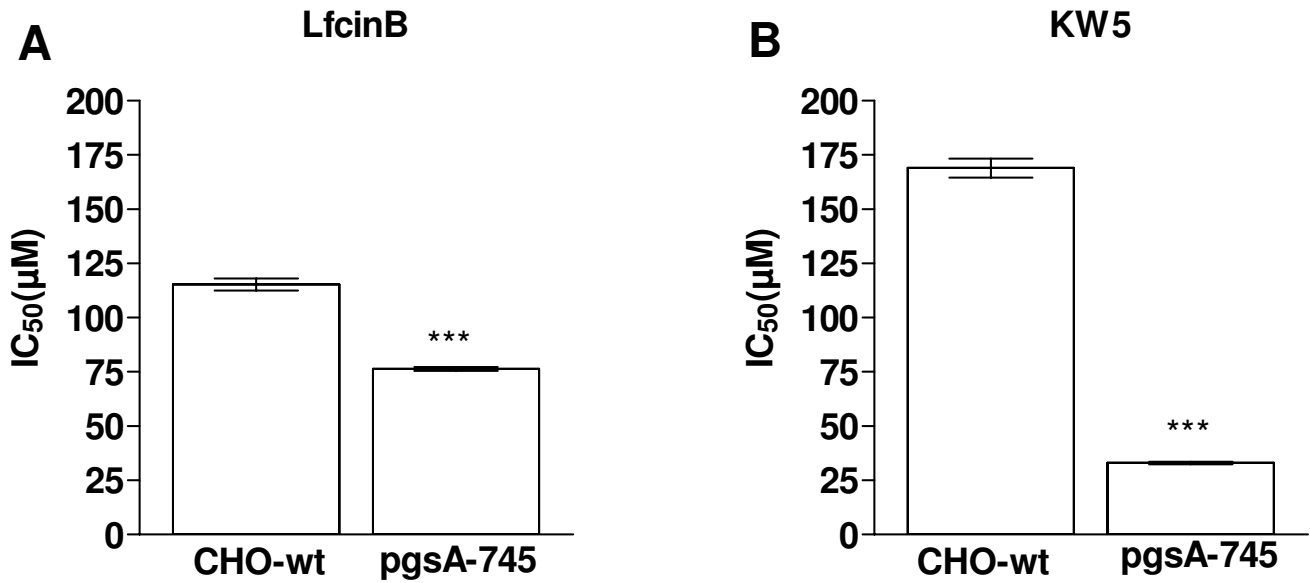


Figure 3
The cytotoxic effect of LfcinB and KW5 against CHO-K1 and pgsA-745 cells. The results are shown as the mean IC₅₀ value ± SEM of LfcinB (A) and KW5 (B) against CHO-K1 and pgsA-745. The experiment was performed three times in duplicate. Statistics were performed by an unpaired t-test (GraphPad). P values are shown as follows: *** P < 0.001.

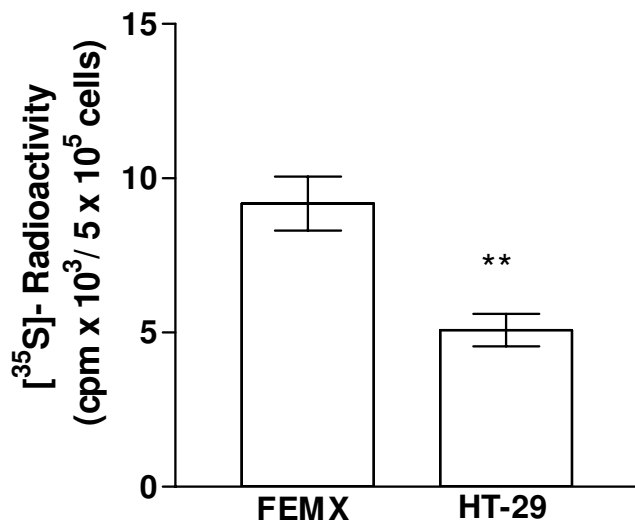


Figure 4
Determination of the amount of [³⁵S]sulfate incorporated into macromolecules at the cell surface of FEMX and HT-29 cells. Data are shown as mean value ± SEM from three independent experiments performed in triplicate. Statistics were performed by an unpaired t-test (GraphPad). P value is shown as follows: ** P < 0.01.

binds with higher affinity to HS than to CS [40]. The amount of HS and CS at the surface of FEMX and HT-29 cells was therefore investigated by treating the ³⁵S-labeled macromolecules in the membrane fraction with cABC and HNO₂. About 70% of the ³⁵S-labeled macromolecules in the membrane fraction of the HT-29 cells were sensitive to HNO₂ treatment, while about 10% were sensitive to cABC treatment. Hence, it can be concluded that about 70% and 10% of the ³⁵S-labeled macromolecules at the surface of these cells are HS and CS, respectively. In the membrane fraction of the FEMX cells about 55% of the ³⁵S-labeled material could be degraded by cABC, while about 45% could be degraded by HNO₂-treatment (Figure 5). As can be seen from Figure 5, the HT-29 cells expressed more HS on the cell surface compared to the FEMX cells, although the FEMX cells expressed more GAGs in total (HS and CS).

Exogenous heparin inhibited the effect of the peptides

The peptides displayed a lower cytotoxic activity against the HT-29 cells, which have HS as their major GAG component, compared to the FEMX cells, which have CS as their major GAG component. This, combined with the fact that the peptides bind more strongly to HS than CS [40], suggests that it is the HS component of the cell surface PGs that inhibits the cytotoxic effect of the peptides. To further investigate if the inhibitory effect was due to HS or CS, the peptides were added to cell cultures together

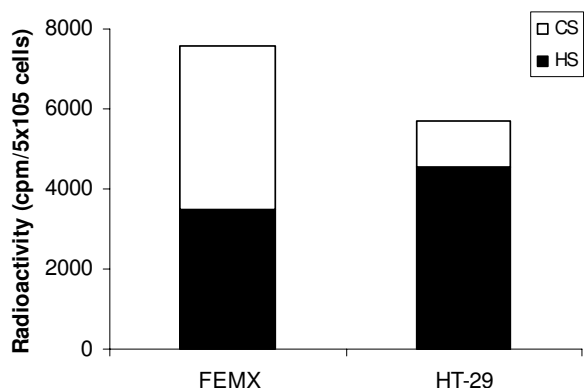


Figure 5
Determination of the amount of [³⁵S]sulfate incorporated into macromolecules at the cell surface of FEMX and HT-29 cells. The experiment was performed twice in duplicate with almost identical results.

with exogenous heparin and CS. At a concentration of 10 $\mu\text{g/ml}$, heparin and CS displayed the same inhibitory effect on the cytotoxic activity of LfcinB against the FEMX cells. However at a concentration of 100 $\mu\text{g/ml}$, heparin showed a higher inhibitory effect compared to CS (Figure 6A). The higher ability of heparin to inhibit the cytotoxic effect of LfcinB compared to CS was further demonstrated against the HT-29 cells (Figure 6B). Heparin also more efficiently inhibited the cytotoxic effect of KW5, compared to CS (Figure 6C–D). These results clearly indicate that the inhibitory effect of cell surface GAGs is due to HS, and not to CS.

Lymphoma cells expressing HS at the cell surface were less susceptible to the cationic peptides

To further investigate the role of HS in the cytotoxic activity of the peptides, the FEMX and the HT-29 cells were treated with heparitinase, an enzyme known to depolymerize HS, before addition of the peptides. However, the results from these experiments were inconsistent, probably due to technical problems with the enzyme. An indirect approach was therefore chosen. In these experiments the cytotoxic activity of LfcinB was studied on six different lymphoma cell lines. Three of the cell lines (KMS-5, U-266, KMM-1) expressed HS at the cell surface, whereas the other three (Sudhl-4, Raji, Ramos) did not, as determined by flow cytometry using an anti-HS antibody, and as reported elsewhere (Uhlin-Hansen, L. Manuscript in preparation). The LfcinB peptide displayed a significantly higher cytotoxic activity against the HS deficient cell lines compared with the HS expressing cell lines (Table 2). The mean IC_{50} values obtained against the HS deficient cell

lines and the HS expressing cell line was $13 \mu\text{M} \pm 2$ and $50 \mu\text{M} \pm 6$, respectively (P value 0.004). This experiment further supports the finding that HS at the cell surface inhibits the cytotoxic activity of the peptides.

HT-29 cells synthesize larger PGs than FEMX cells

In addition to the type of GAGs, other features such as the size of the GAG chains might affect the cytotoxic effect of the peptides. The size of the proteoglycan molecules and their GAG chains was therefore analyzed by Superose-6 gel chromatography. The ³⁵S-labeled macromolecules from the membrane fraction of the FEMX cells and the HT-29 cells eluted with peak k_{av} values of 0, 33 and 0, 25, respectively (Figure 7A). This shows that the HT-29 cells expressed larger proteoglycan molecules at the cell surface, compared to the FEMX cells. Chromatography of corresponding ³⁵S-labeled material after alkali treatment revealed a shift in the elution of the peak fractions (Figure 7B), confirming that the GAGs in the membrane fractions were part of PG molecules. The size of the attached ³⁵S-labeled GAG chains from the HT-29 and FEMX cells was almost identical, eluting with peak k_{av} -values of 0,38 and 0,40 respectively. These k_{av} -values correspond to molecular weight of approximately 48 kDa and 45 kDa. These results indicate that the larger size of the PGs in HT-29 cells, compared to the FEMX cells, is due to more GAG chains attached to each core protein, or larger core proteins.

Discussion

It is known that a variety of lytic peptides show a selective cytotoxic activity against tumor cells compared to normal cells. It is believed that this selectivity is due to a more negatively charged cell surface of the tumor cells, but the exact mechanism is not known. The plasma membrane of almost all mammalian cells contains PGs substituted with GAG chains. The GAGs are highly anionic due to a large number of negatively charged sulfate groups [28]. We have previously shown that LfcinB and other lytic peptides bind to GAGs [27] and we therefore hypothesized that cell surface GAGs increase binding and therefore in accordance with work on other anionic membrane components increase the cytotoxic activity of CAPs. However, the present study showed that cell surface GAGs inhibited the cytotoxic effect of LfcinB and the designer lytic peptide, KW5.

In the initial experiments we used two cell lines which express different amounts of GAGs at the cell surface; the melanoma cell line FEMX and the colon carcinoma cell line HT-29. Both peptides displayed higher cytotoxic activity against the FEMX cells, which express a larger amount of GAGs compared to the HT-29 cells. This result is in agreement with previous studies showing that an increased negative charge on the cell surface of target cells

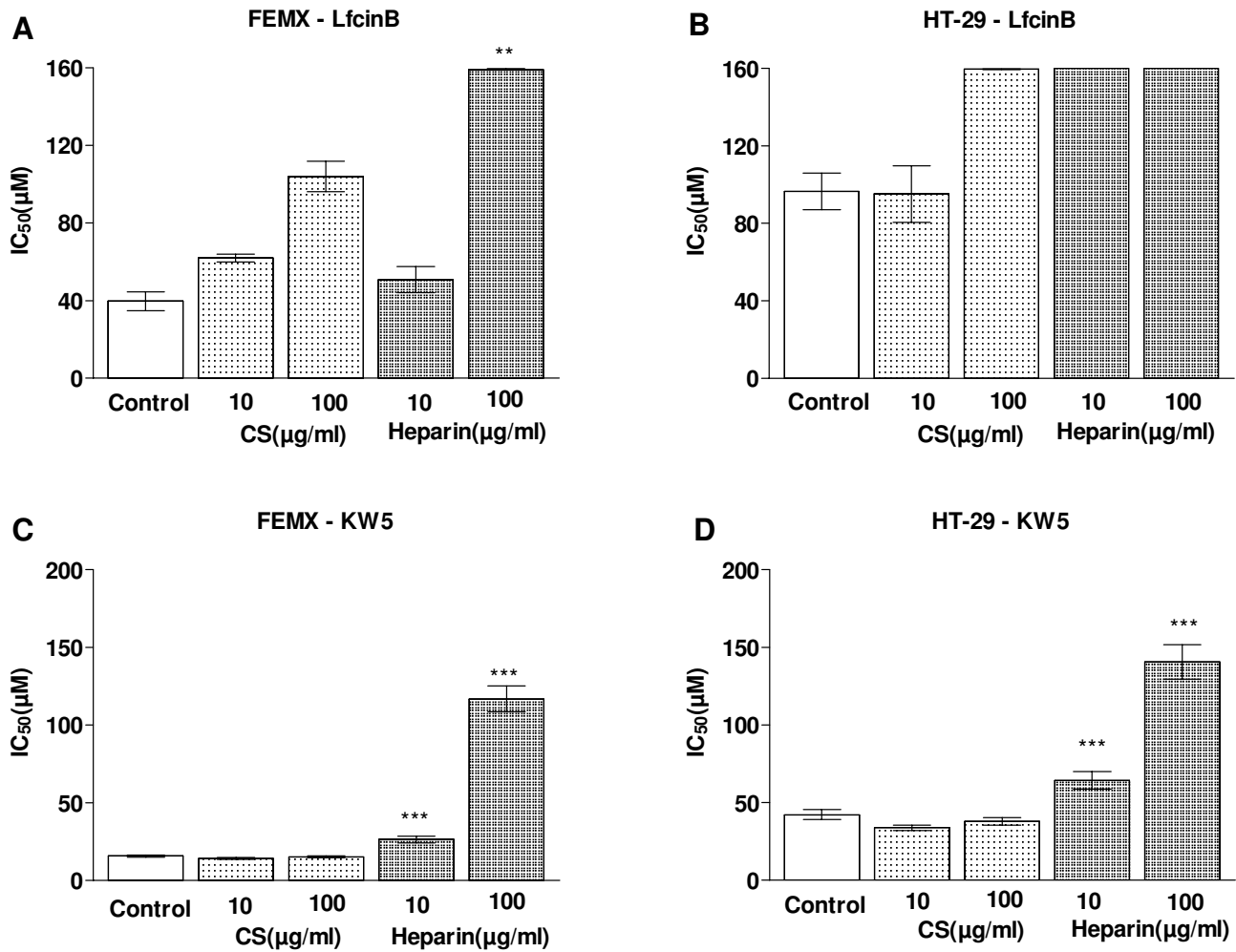


Figure 6

The cytotoxic effect of LfcinB and KW5 against FEMX and HT-29 cells, in the presence of soluble heparin and chondroitin sulfate. The results are shown as the mean IC₅₀ value ± SEM (n = 5) of LfcinB and KW5 against FEMX (A) and HT-29 (B) cells, in the presence of soluble heparin and chondroitin sulfate. The IC₅₀ values obtained from cell cultures containing 10 µg/ml soluble heparin were compared with cell cultures containing 10 µg/ml soluble CS by an unpaired t-test (Graph-Pad). The same comparison was performed between cell cultures containing 100 µg/ml soluble heparin and 100 µg/ml soluble CS. P values are shown as follows: ** P < 0.01 and *** P < 0.001.

enhances the cytotoxic activity of lytic peptides [50,51]. To confirm our hypothesis that it is the negatively charged sulfate groups on the GAG chains that mediate the binding of the peptides, the sulfation of the GAGs was reduced by adding sodium chlorate to the culture medium before the cells were exposed to the peptides. Chlorate reduces the overall sulfation of GAGs by competing with sulfate ions for binding to ATP-sulfolylase [52]. Interestingly, we found that the peptides displayed a significantly greater cytotoxic activity against chlorate-treated cells compared to non-treated cells, indicating that the negatively charged GAGs at the cell surface actually reduce the cytotoxic activity of the peptides. Previous studies have shown that incu-

bating cells with sodium chlorate only leads to a partial reduction of the sulfation of the GAG chains [53]. This may explain why the effect of chlorate on the cytotoxic effect was only moderate.

In order to investigate the involvement of GAGs more directly, the cytotoxic activity of the peptides was studied with wild type and GAG-defective CHO cells [41]. These cells have been widely used to study the role of cell surface GAGs in various processes such as viral infection, growth factor signaling and cell adhesion [54]. The pgsA-745 cells have defective xylosyltransferase, an enzyme necessary for biosynthesis of HS and CS [41]. The higher cytotoxic activ-

Table 2: The cytotoxic effect of LfcinB against lymphoma cell lines expressing different levels of HS.

| Cell line | ^a Cell surface HS | ^b IC ₅₀ (μ M) |
|-----------|------------------------------|--|
| KMS-5 | + | 38 |
| U-266 | + | 55 |
| KMM-1 | + | 57 |
| Sudhl-4 | - | 16 |
| Raji | - | 13 |
| Ramos | - | 10 |

^aCell surface HS was measured using an anti-HS antibody and flow cytometry. Cell lines marked with + express HS, while cell lines marked with -lack HS.

^bIC₅₀ is the inhibitory concentration of the LfcinB peptide in (μ M) where 50% of the cells are killed.

ity of the peptides against the GAG deficient pgsA-745 cells compared to the wild type CHO cells expressing normal levels of GAGs at the cell surface clearly indicate that GAGs have an inhibitory effect on the cytotoxic activity of these peptides. This finding is in contrast to reports about other anionic cell surface molecules which have been shown to enhance the anticancer activity of CAPs [50,51].

Cell surface PGs may be substituted with different types of GAG chains, either HS or CS [28]. We have previously shown that LfcinB and other lytic peptides bind with higher affinity to HS than CS [40]. We therefore examined the expression pattern of GAGs on the FEMX and HT-29 cells. We found that the FEMX cells expressed cell surface PGs mostly substituted with CS, whereas the PGs at the surface of HT-29 cells were mostly substituted with HS. This expression profile is consistent with previous reports showing that malignant melanoma cells have a high

expression of CSPGs [55], while the HT-29 cells has a high expression of HSPGs. [56]. The lower cytotoxic activity of the peptides against the HT-29 cells compared to the FEMX cells therefore suggests that the inhibitory effect of GAGs is attributed to HS and not CS. The addition of soluble heparin and CS to cell cultures is widely used to study the interaction between various molecules and cell surface HS and CS [57,58]. In the present study we found that exogenously added heparin had a stronger inhibitory effect on the cytotoxic activity of the peptides, compared to CS. This experiment strongly supports the finding that it is HS, and not CS, that inhibits the cytotoxic activity of the peptides. The inhibitory effect of HS was further supported by the fact that lymphoma cells lacking HS at the cell surface were much more sensitive to LfcinB than lymphoma cells expressing cell surface HS.

Cell surface PGs belong to two different families, the syndecans and the glypicans [59,60]. They can be substituted with both HS and CS side chains, but HS is the dominant type of GAG on the surface of most cell types [61]. The complex polysaccharide structure gives HS a higher conformational flexibility compared to CS [62]. This may explain the fact that LfcinB and other lytic peptides bind with higher affinity to HS than to CS since the sequence and structural diversity in the lytic peptides may require a high flexibility in the molecules they bind to. Previous studies have shown that the antibacterial activity of the peptides LL-37 [63,64] and α -defensin [65] are inactivated by GAGs. It has also been demonstrated that the LfcinB peptide and a set of short α -helical peptides are able to block HSV infection by binding to cell surface HS, which is used as a target molecule for HSV internalization

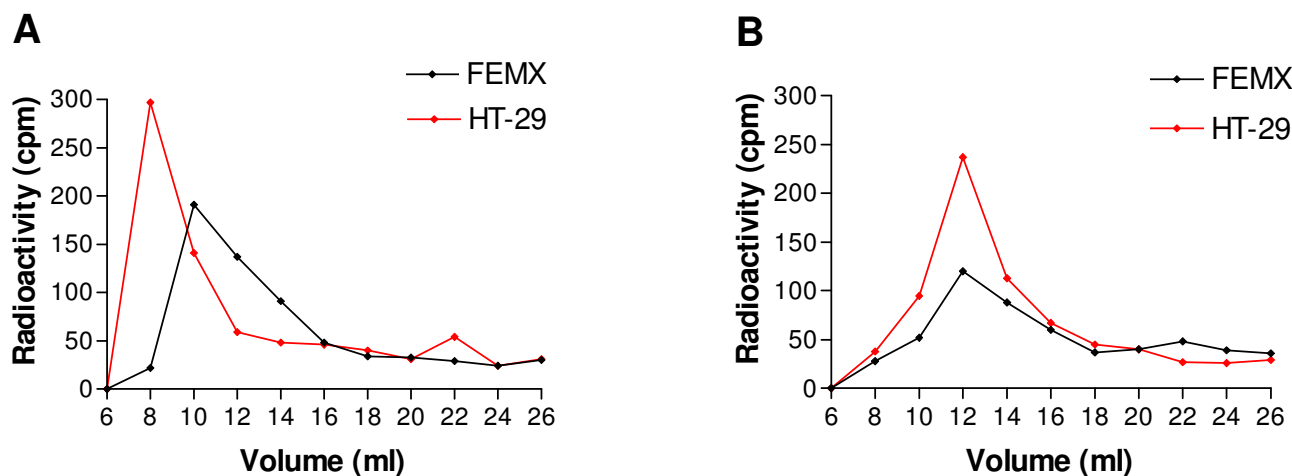


Figure 7
Superoose 6 gel chromatography of ³⁵S-labeled macromolecules from the plasma membrane fraction before and after alkali treatment. **A)** Intact ³⁵S-labeled PGs and **B)** ³⁵S-labeled GAGs, obtained by alkali treatment. The experiment was performed twice with similar results.

[40,66,67]. It is believed that PGs with their unbranched GAG chains extend like a brush out from the surface of the cells, as shown in the cartoon in Figure 8. As discussed, our results show that HS at the surface of the target cells inhibit the cytotoxic activity of the peptides. We therefore propose that the long, unbranched HS chains can sequester the lytic peptides away from the phospholipid bilayer and thereby impede their ability to induce cytolysis of the target cells, as shown in Figure 8.

An earlier finding showing that low-molecular heparin is less efficient in binding lactoferrin than normal sized heparin [68], indicates that the size of the GAG chains could be an important factor for the interaction with the peptides. In the present study we found the size of the PGs on the surface of the HT-29 cells to be larger than the PGs on the surface of the FEMX cells. Larger PGs may keep the lytic peptides at a longer distance from the phospholipid bilayer than smaller PGs. The size of the cell surface PGs may therefore influence the sensitivity of the cells for lytic peptides. In addition to the size of the proteoglycans the degree and pattern of sulfation of the GAG chains may also influence the level of interaction between the peptides and the GAG chains. If the peptides have high sequence specificity and requires a particular sulfation pattern in order to interact with the GAGs this would also affect their binding capacity as shown for growth factors [69,70], antithrombin III [71] and matrix ligand [72].

It has been shown that phosphatidylserine [51] and sialic acid [50] found on the cell surface of tumor cells enhance the antitumor activity of CAPs. Phosphatidylserine is present at the outer leaflet of many cancer cell lines and a higher number of sialic acids is present on glycoproteins and glycolipids on cancer cells compared to normal cells. Thus, these smaller anionic molecules located closer to the phospholipid bilayer of the tumor cells might facilitate the activity of the peptides whereas the large PGs have an opposite effect.

Many studies have shown that poorly differentiated tumors have reduced expression levels of cell surface HSPGs [35], indicating that the biosynthesis of HS PGs is reduced in these tumors. The best studied cell surface proteoglycan is syndecan-1. In a wide range of carcinomas it has been shown that a low expression of syndecan-1 on tumor cell surfaces correlates with increasing metastatic potential and poor prognosis [73-75]. In addition to reduced synthesis, an increased degradation of cell surface HS may take place. Heparanase is a HS degrading enzyme released by several cell types [76]. It has been found that many tumors overexpress heparanase [77]. Further, increased expression of heparanase is correlated with the high metastatic capacity of tumor cells [77]. Heparanase released by the tumor cells degrades HS both in the extracellular matrix and at the cell surface. Hence, the low level of cell surface HS found in many tumors can be a result of

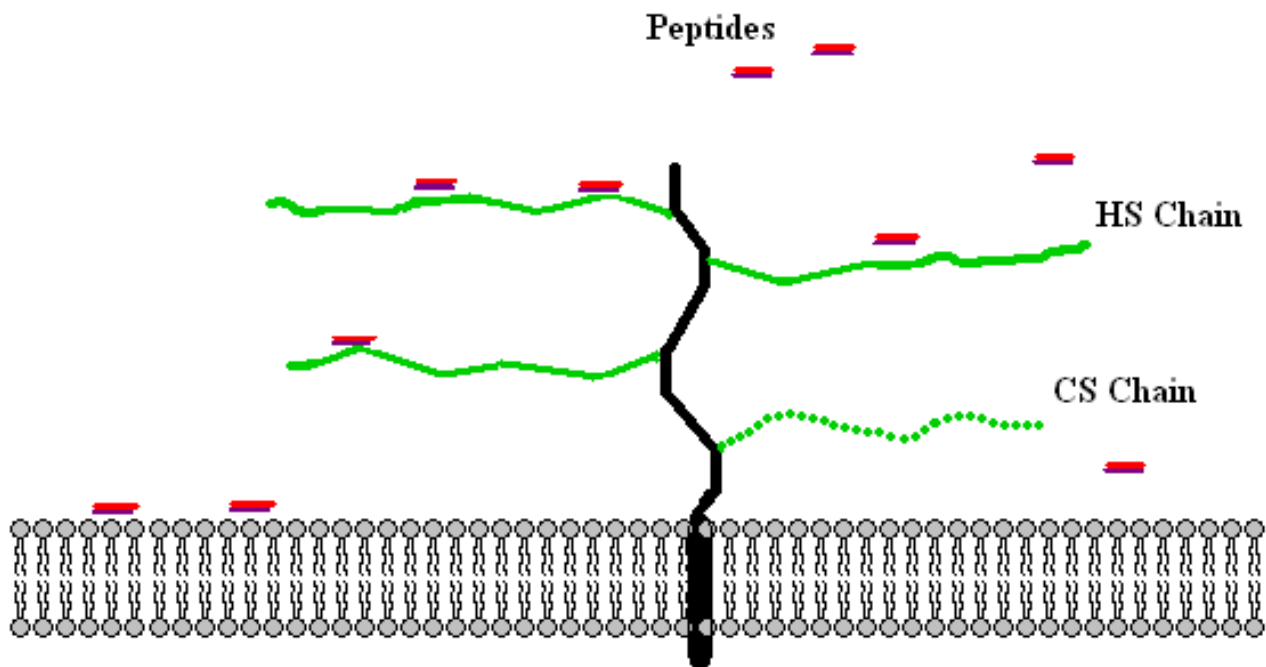


Figure 8
Schematic model of the interaction of HS chains with CAPs on the cell surface.

increased level of heparanase. Alterations in the expression pattern of HS at the surface of tumor cells, due to reduced biosynthesis of HS and/or increased expression of heparanase, can explain, at least partly, the fact that many cancer cells show increased susceptibility toward certain CAPs.

Conclusion

In the present study we show for the first time that negatively charged molecules on the surface of tumor cells can inhibit the antitumor activity of CAPs. Further studies should be done with other structurally different CAPs to conclude whether this is the case for all types of CAPs. We show that the cytotoxic activity was significantly reduced in cells expressing HS at the surface. Our results indicate that HS at the surface of cancer cells can sequester the CAPs away from the phospholipid bilayer and thereby hinder their ability to induce cytolysis. Previous studies have shown that low level of cell surface HS is correlated with high metastatic potential of cancer cells. Our results indicate that poorly differentiated tumors, with low expression of cell surface HS, are more susceptible to treatment with CAPs. To confirm this, the effect of CAPs on tumors with high and low HS expression should be explored with *in vivo* studies.

Competing interests

The authors declare that they have no competing interests.

Authors' contributions

BF carried out all experiments, including cell culture, cytotoxicity assays, and chromatography. ØR and LUH designed the study. All authors contributed in the discussion and interpretation of the results and writing the manuscript.

Acknowledgements

The financial support of Helse Nord, Lytix Biopharma and The Norwegian Cancer Society is greatly acknowledged. The authors wish to thank Prof. Masaki Yanagishita, Tokyo Medical and Dental University, for valuable discussions.

References

- Boman HG: **Peptide antibiotics and their role in innate immunity.** *Annu Rev Immunol* 1995, **13**:61-92.
- Hultmark D, Engstrom A, Bennich H, Kapur R, Boman HG: **Insect immunity: isolation and structure of cecropin D and four minor antibacterial components from *Cecropia* pupae.** *Eur J Biochem* 1982, **127**(1):207-217.
- Cornet B, Bonmatin JM, Hetru C, Hoffmann JA, Ptak M, Vovelle F: **Refined three-dimensional solution structure of insect defensin A.** *Structure* 1995, **3**(5):435-448.
- Li ZQ, Merrifield RB, Boman IA, Boman HG: **Effects on electrophoretic mobility and antibacterial spectrum of removal of two residues from synthetic sarcotoxin IA and addition of the same residues to cecropin B.** *FEBS Lett* 1988, **231**(2):299-302.
- Bechinger B: **Structure and functions of channel-forming peptides: magainins, cecropins, melittin and alamethicin.** *J Membr Biol* 1997, **156**(3):197-211.
- Polozov IV, Polozova AI, Tytler EM, Anantharamaiah GM, Segrest JP, Woolley GA, Epanand RM: **Role of lipids in the permeabilization of membranes by class L amphipathic helical peptides.** *Biochemistry* 1997, **36**(30):9237-9245.
- Eliassen LT, Berge G, Sveinbjornsson B, Svendsen JS, Vorland LH, Rekdal O: **Evidence for a direct antitumor mechanism of action of bovine lactoferricin.** *Anticancer Res* 2002, **22**(5):2703-2710.
- Eliassen LT, Berge G, Leknessund A, Wikman M, Lindin I, Lokke C, Ponthan F, Johnsen JI, Sveinbjornsson B, Kogner P, et al.: **The antimicrobial peptide, lactoferricin B, is cytotoxic to neuroblastoma cells in vitro and inhibits xenograft growth in vivo.** *Int J Cancer* 2006, **119**(3):493-500.
- Papo N, Shahar M, Eisenbach L, Shai Y: **A novel lytic peptide composed of DL-amino acids selectively kills cancer cells in culture and in mice.** *J Biol Chem* 2003, **278**(23):21018-21023.
- Chen Y, Xu X, Hong S, Chen J, Liu N, Underhill CB, Creswell K, Zhang L: **RGD-Tachyplesin inhibits tumor growth.** *Cancer Res* 2001, **61**(6):2434-2438.
- Dennison SR, Whittaker M, Harris F, Phoenix DA: **Anticancer alpha-helical peptides and structure/function relationships underpinning their interactions with tumour cell membranes.** *Curr Protein Pept Sci* 2006, **7**(6):487-499.
- Mader JS, Hoskin DW: **Cationic antimicrobial peptides as novel cytotoxic agents for cancer treatment.** *Expert Opin Investig Drugs* 2006, **15**(8):933-946.
- Johnstone SA, Gelmon K, Mayer LD, Hancock RE, Bally MB: **In vitro characterization of the anticancer activity of membrane-active cationic peptides. I. Peptide-mediated cytotoxicity and peptide-enhanced cytotoxic activity of doxorubicin against wild-type and p-glycoprotein over-expressing tumor cell lines.** *Anticancer Drug Des* 2000, **15**(2):151-160.
- Cruciani RA, Barker JL, Durell SR, Raghunathan G, Guy HR, Zasloff M, Stanley EF: **Magainin 2, a natural antibiotic from frog skin, forms ion channels in lipid bilayer membranes.** *Eur J Pharmacol* 1992, **226**(4):287-296.
- Ohsaki Y, Gazdar AF, Chen HC, Johnson BE: **Antitumor activity of magainin analogues against human lung cancer cell lines.** *Cancer Res* 1992, **52**(13):3534-3538.
- Kim S, Kim SS, Bang YJ, Kim SJ, Lee BJ: **In vitro activities of native and designed peptide antibiotics against drug sensitive and resistant tumor cell lines.** *Peptides* 2003, **24**(7):945-953.
- Matsuzaki K: **Why and how are peptide-lipid interactions utilized for self-defense? Magainins and tachyplesins as archetypes.** *Biochim Biophys Acta* 1999, **1462**(1-2):1-10.
- Pouny Y, Shai Y: **Interaction of D-amino acid incorporated analogues of pardaxin with membranes.** *Biochemistry* 1992, **31**(39):9482-9490.
- Oren Z, Shai Y: **Mode of action of linear amphipathic alpha-helical antimicrobial peptides.** *Biopolymers* 1998, **47**(6):451-463.
- Ellerby HM, Arap W, Ellerby LM, Kain R, Andrusiak R, Rio GD, Krajewski S, Lombardo CR, Rao R, Ruoslahti E, et al.: **Anti-cancer activity of targeted pro-apoptotic peptides.** *Nat Med* 1999, **5**(9):1032-1038.
- Yeaman MR, Yount NY: **Mechanisms of antimicrobial peptide action and resistance.** *Pharmacol Rev* 2003, **55**(1):27-55.
- Utsugi T, Schroit AJ, Connor J, Bucana CD, Fidler IJ: **Elevated expression of phosphatidylserine in the outer membrane leaflet of human tumor cells and recognition by activated human blood monocytes.** *Cancer Res* 1991, **51**(11):3062-3066.
- Bucana CD, Hoyer LC, Schroit AJ, Kleinerman E, Fidler IJ: **Ultrastructural studies of the interaction between liposome-activated human blood monocytes and allogeneic tumor cells in vitro.** *Am J Pathol* 1983, **112**(1):101-111.
- Sugimura M, Donato R, Kakkar VV, Scully MF: **Annexin V as a probe of the contribution of anionic phospholipids to the procoagulant activity of tumour cell surfaces.** *Blood Coagul Fibrinolysis* 1994, **5**(3):365-373.
- Rao LV, Tait JF, Hoang AD: **Binding of annexin V to a human ovarian carcinoma cell line (OC-2008). Contrasting effects on cell surface factor VIIa/tissue factor activity and prothrombinase activity.** *Thromb Res* 1992, **67**(5):517-531.
- Kim YJ, Varki A: **Perspectives on the significance of altered glycosylation of glycoproteins in cancer.** *Glycoconj J* 1997, **14**(5):569-576.

27. Dube DH, Bertozzi CR: **Glycans in cancer and inflammation – potential for therapeutics and diagnostics.** *Nat Rev Drug Discov* 2005, **4(6)**:477-488.
28. Kjellen L, Lindahl U: **Proteoglycans: structures and interactions.** *Annu Rev Biochem* 1991, **60**:443-475.
29. Sugahara K, Mikami T, Uyama T, Mizuguchi S, Nomura K, Kitagawa H: **Recent advances in the structural biology of chondroitin sulfate and dermatan sulfate.** *Curr Opin Struct Biol* 2003, **13(5)**:612-620.
30. Tkachenko E, Rhodes JM, Simons M: **Syndecans: new kids on the signaling block.** *Circ Res* 2005, **96(5)**:488-500.
31. Rabenstein DL: **Heparin and heparan sulfate: structure and function.** *Nat Prod Rep* 2002, **19(3)**:312-331.
32. Zsila F, Gedeon G: **Binding of anti-prion agents to glycosaminoglycans: evidence from electronic absorption and circular dichroism spectroscopy.** *Biochem Biophys Res Commun* 2006, **346(4)**:1267-1274.
33. Kleeff J, Ishiwata T, Kumbasar A, Friess H, Buchler MW, Lander AD, Korc M: **The cell-surface heparan sulfate proteoglycan glypican-1 regulates growth factor action in pancreatic carcinoma cells and is overexpressed in human pancreatic cancer.** *J Clin Invest* 1998, **102(9)**:1662-1673.
34. Matsuda K, Maruyama H, Guo F, Kleeff J, Itakura J, Matsumoto Y, Lander AD, Korc M: **Glypican-1 is overexpressed in human breast cancer and modulates the mitogenic effects of multiple heparin-binding growth factors in breast cancer cells.** *Cancer Res* 2001, **61(14)**:5562-5569.
35. Sanderson RD: **Heparan sulfate proteoglycans in invasion and metastasis.** *Semin Cell Dev Biol* 2001, **12(2)**:89-98.
36. Jayson GC, Lyon M, Paraskeva C, Turnbull JE, Deakin JA, Gallagher JT: **Heparan sulfate undergoes specific structural changes during the progression from human colon adenoma to carcinoma in vitro.** *J Biol Chem* 1998, **273(1)**:51-57.
37. Safaiyan F, Lindahl U, Salmivirta M: **Selective reduction of 6-O-sulfation in heparan sulfate from transformed mammary epithelial cells.** *Eur J Biochem* 1998, **252(3)**:576-582.
38. Mader JS, Salsman J, Conrad DM, Hoskin DW: **Bovine lactoferricin selectively induces apoptosis in human leukemia and carcinoma cell lines.** *Mol Cancer Ther* 2005, **4(4)**:612-624.
39. Yoo YC, Watanabe S, Watanabe R, Hata K, Shimazaki K, Azuma I: **Bovine lactoferrin and Lactoferricin inhibit tumor metastasis in mice.** *Adv Exp Med Biol* 1998, **443**:285-291.
40. Jenssen H, Andersen JH, Uhlin-Hansen L, Gutteberg TJ, Rekdal O: **Anti-HSV activity of lactoferricin analogues is only partly related to their affinity for heparan sulfate.** *Antiviral Res* 2004, **61(2)**:101-109.
41. Esko JD, Stewart TE, Taylor WH: **Animal cell mutants defective in glycosaminoglycan biosynthesis.** *Proc Natl Acad Sci USA* 1985, **82(10)**:3197-3201.
42. Bai X, Wei G, Sinha A, Esko JD: **Chinese hamster ovary cell mutants defective in glycosaminoglycan assembly and glucuronosyltransferase I.** *J Biol Chem* 1999, **274(19)**:13017-13024.
43. Eliassen LT, Haug BE, Berge G, Rekdal O: **Enhanced antitumour activity of 15-residue bovine lactoferricin derivatives containing bulky aromatic amino acids and lipophilic N-terminal modifications.** *J Pept Sci* 2003, **9(8)**:510-517.
44. Keller KM, Brauer PR, Keller JM: **Modulation of cell surface heparan sulfate structure by growth of cells in the presence of chlorate.** *Biochemistry* 1989, **28(20)**:8100-8107.
45. Yanagishita M, Hascall VC: **Proteoglycans synthesized by rat ovarian granulosa cells in culture. Isolation, fractionation, and characterization of proteoglycans associated with the cell layer.** *J Biol Chem* 1984, **259(16)**:10260-10269.
46. Shively JE, Conrad HE: **Formation of anhydrosugars in the chemical depolymerization of heparin.** *Biochemistry* 1976, **15(18)**:3932-3942.
47. Greve H, Cully Z, Blumberg P, Kresse H: **Influence of chlorate on proteoglycan biosynthesis by cultured human fibroblasts.** *J Biol Chem* 1988, **263(26)**:12886-12892.
48. Uhlin-Hansen L, Yanagishita M: **Differential effect of brefeldin A on the biosynthesis of heparan sulfate and chondroitin/dermatan sulfate proteoglycans in rat ovarian granulosa cells in culture.** *J Biol Chem* 1993, **268(23)**:17370-17376.
49. Stringer SE, Gallagher JT: **Heparan sulphate.** *Int J Biochem Cell Biol* 1997, **29(5)**:709-714.
50. Risso A, Zanetti M, Gennaro R: **Cytotoxicity and apoptosis mediated by two peptides of innate immunity.** *Cell Immunol* 1998, **189(2)**:107-115.
51. Schroder-Borm H, Bakalova R, Andra J: **The NK-lysin derived peptide NK-2 preferentially kills cancer cells with increased surface levels of negatively charged phosphatidylserine.** *FEBS Lett* 2005, **579(27)**:6128-6134.
52. Klaassen CD, Boles JW: **Sulfation and sulfotransferases 5: the importance of 3'-phosphoadenosine 5'-phosphosulfate (PAPS) in the regulation of sulfation.** *Faseb J* 1997, **11(6)**:404-418.
53. Safaiyan F, Kolset SO, Prydz K, Gottfridsson E, Lindahl U, Salmivirta M: **Selective effects of sodium chlorate treatment on the sulfation of heparan sulfate.** *J Biol Chem* 1999, **274(51)**:36267-36273.
54. Zhang L, Lawrence R, Frazier BA, Esko JD: **CHO glycosylation mutants: proteoglycans.** *Methods Enzymol* 2006, **416**:205-221.
55. Smetsers TF, Westerlo EM van de, ten Dam GB, Overes IM, Schalkwijk J, van Muijen GN, van Kuppevelt TH: **Human single-chain antibodies reactive with native chondroitin sulfate detect chondroitin sulfate alterations in melanoma and psoriasis.** *J Invest Dermatol* 2004, **122(3)**:707-716.
56. Molist A, Romaris M, Lindahl U, Villena J, Touab M, Bassols A: **Changes in glycosaminoglycan structure and composition of the main heparan sulphate proteoglycan from human colon carcinoma cells (perlecan) during cell differentiation.** *Eur J Biochem* 1998, **254(2)**:371-377.
57. Guibinga GH, Miyahara A, Esko JD, Friedmann T: **Cell surface heparan sulfate is a receptor for attachment of envelope protein-free retrovirus-like particles and VSV-G pseudotyped MLV-derived retrovirus vectors to target cells.** *Mol Ther* 2002, **5(5 Pt 1)**:538-546.
58. Ueda M, Matsumoto S, Hayashi S, Kobayashi N, Noguchi H: **Cell surface sulfate proteoglycans mediate the internalization of PDX-1 protein.** *Cell Transplant* 2008, **17(1-2)**:91-97.
59. Bernfield M, Kokenyesi R, Kato M, Hinkes MT, Spring J, Gallo RL, Lose E: **Biology of the syndecans: a family of transmembrane heparan sulfate proteoglycans.** *Annu Rev Cell Biol* 1992, **8**:365-393.
60. Fransson LA: **Glypicans.** *Int J Biochem Cell Biol* 2003, **35(2)**:125-129.
61. Tumova S, Woods A, Couchman JR: **Heparan sulfate proteoglycans on the cell surface: versatile coordinators of cellular functions.** *Int J Biochem Cell Biol* 2000, **32(3)**:269-288.
62. Rees SG, Hughes W, Embery G: **Interaction of glucuronic acid and iduronic acid-rich glycosaminoglycans and their modified forms with hydroxyapatite.** *Biomaterials* 2002, **23(2)**:481-489.
63. Schmidtchen A, Frick IM, Andersson E, Tapper H, Bjorck L: **Proteinases of common pathogenic bacteria degrade and inactivate the antibacterial peptide LL-37.** *Mol Microbiol* 2002, **46(1)**:157-168.
64. Baranska-Rybak W, Sonesson A, Nowicki R, Schmidtchen A: **Glycosaminoglycans inhibit the antibacterial activity of LL-37 in biological fluids.** *J Antimicrob Chemother* 2006, **57(2)**:260-265.
65. Schmidtchen A, Frick IM, Bjorck L: **Dermatan sulphate is released by proteinases of common pathogenic bacteria and inactivates antibacterial alpha-defensin.** *Mol Microbiol* 2001, **39(3)**:708-713.
66. Jenssen H, Andersen JH, Mantzilas D, Gutteberg TJ: **A wide range of medium-sized, highly cationic, alpha-helical peptides show antiviral activity against herpes simplex virus.** *Antiviral Res* 2004, **64(2)**:119-126.
67. Andersen JH, Jenssen H, Sandvik K, Gutteberg TJ: **Anti-HSV activity of lactoferrin and lactoferricin is dependent on the presence of heparan sulphate at the cell surface.** *J Med Virol* 2004, **74(2)**:262-271.
68. Roseanu A, Chelu F, Trif M, Motas C, Brock JH: **Inhibition of binding of lactoferrin to the human promonocyte cell line THP-1 by heparin: the role of cell surface sulphated molecules.** *Biochim Biophys Acta* 2000, **1475(1)**:35-38.
69. Ashikari-Hada S, Habuchi H, Kariya Y, Itoh N, Reddi AH, Kimata K: **Characterization of growth factor-binding structures in heparin/heparan sulfate using an octasaccharide library.** *J Biol Chem* 2004, **279(13)**:12346-12354.
70. Yuguchi Y, Kominato R, Ban T, Urakawa H, Kajiwara K, Takano R, Kamei K, Hara S: **Structural observation of complexes of FGF-**

- 2 and regioselectively desulfated heparin in aqueous solutions.** *Int J Biol Macromol* 2005, **35**(1-2):19-25.
71. Kusche M, Torri G, Casu B, Lindahl U: **Biosynthesis of heparin. Availability of glucosaminyl 3-O-sulfation sites.** *J Biol Chem* 1990, **265**(13):7292-7300.
 72. Mahalingam Y, Gallagher JT, Couchman JR: **Cellular adhesion responses to the heparin-binding (HepII) domain of fibronectin require heparan sulfate with specific properties.** *J Biol Chem* 2007, **282**(5):3221-3230.
 73. Rintala M, Inki P, Klemi P, Jalkanen M, Grenman S: **Association of syndecan-1 with tumor grade and histology in primary invasive cervical carcinoma.** *Gynecol Oncol* 1999, **75**(3):372-378.
 74. Harada K, Masuda S, Hirano M, Nakanuma Y: **Reduced expression of syndecan-1 correlates with histologic dedifferentiation, lymph node metastasis, and poor prognosis in intrahepatic cholangiocarcinoma.** *Human Pathology* 2003, **34**(9):857-863.
 75. Kurokawa H, Zhang M, Matsumoto S, Yamashita Y, Tanaka T, Takamori K, Igawa K, Yoshida M, Fukuyama H, Takahashi T, et al.: **Reduced syndecan-1 expression is correlated with the histological grade of malignancy at the deep invasive front in oral squamous cell carcinoma.** *J Oral pathol Med* 2006, **35**(5):301-306.
 76. Bame K: **Heparanase: endoglycosidases that degrade heparan sulfate proteoglycans.** *Glycobiology* 2001, **11**(6):91-98.
 77. Ilan N, Elkin M, Vlodaysky I: **Regulation, function and clinical significance of heparanase in cancer metastasis and angiogenesis.** *Int J Biochem Cell Biol* 2006, **38**(12):2018-2039.

Pre-publication history

The pre-publication history for this paper can be accessed here:

<http://www.biomedcentral.com/1471-2407/9/183/prepub>

Publish with **BioMed Central** and every scientist can read your work free of charge

"BioMed Central will be the most significant development for disseminating the results of biomedical research in our lifetime."

Sir Paul Nurse, Cancer Research UK

Your research papers will be:

- available free of charge to the entire biomedical community
- peer reviewed and published immediately upon acceptance
- cited in PubMed and archived on PubMed Central
- yours — you keep the copyright

Submit your manuscript here:
http://www.biomedcentral.com/info/publishing_adv.asp

